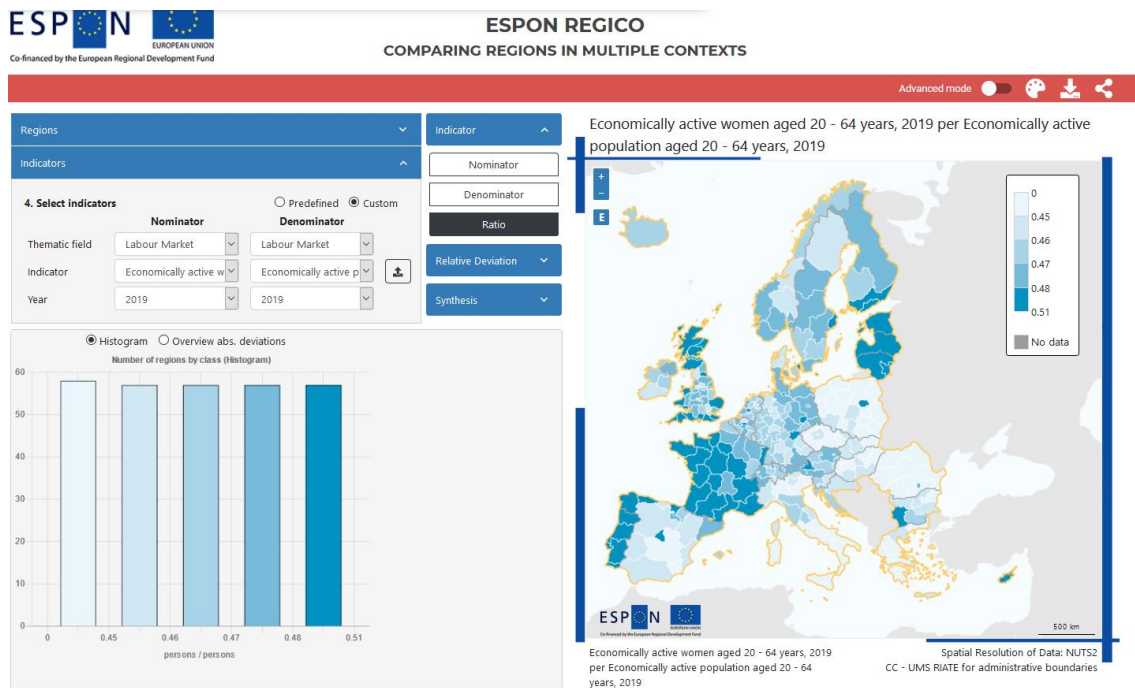


ESPON REGICO Tool (HyperAtlas 3.0)

Period of performance: 2020-2021

The HyperAtlas is a tool for comparing regions which was developed in the 1990s by a group of researchers of the “HyperCarte”. In 2020, ÖIR started to update this tool, which was renamed to ESPON REGICO – Comparing regions in multiple contexts. ESPON REGICO allows to look at Europe regions in different spatial contexts, e.g. from a European perspective, a national perspective and a neighbourhood perspective in order to identify regional disparities as well as regions catching up or lagging behind. It allows to choose among a wide set of socio-economic, territorial and other indicators or even upload custom indicators.



ESPON REGICO-Tool, © ESPON

The contract included the re-design of the tool as well as ensuring its user-friendliness by enquires among different user groups, the programming of the tool, its testing and outreach activities. ÖIR was responsible for the project management, ensuring user-friendliness, building up the indicator database for NUTS2016 as well as for outreach activities.

Project team: Stephanie Kirchmayr-Novak; Roland Gaugitsch, Chien-Hui Hsiung, Joanne Tordy

Partner: Laurentia Technologies

Client: ESPON EGTC

<https://regico.espon.eu/>