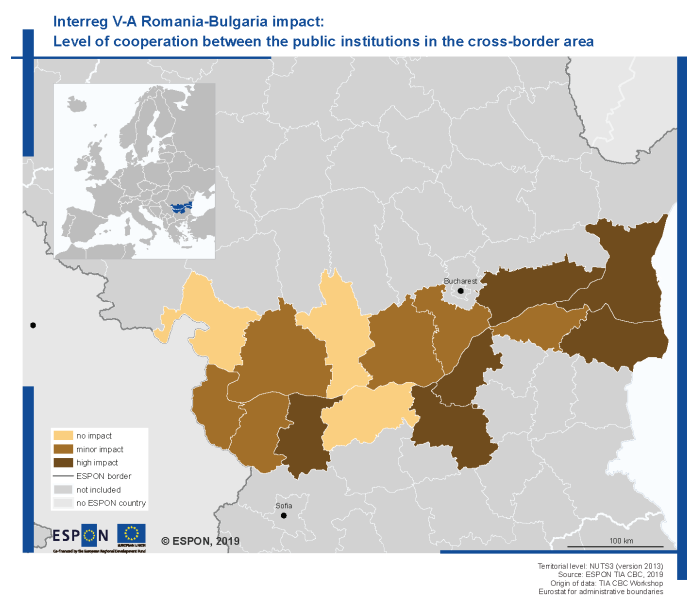


Territorial Impact Assessment for Cross-Border Cooperation

Period of performance: 2018-2019

How can territorial effects of INTERREG programmes in an ex-post situation be measured? This question is addressed in a project by ÖIR in a consortium with 8 international partners who developed a method for “Territorial Impact Assessment” (TIA) for cross-border cooperation programmes (INTERREG A).

A thoroughly documented, well structured 5 step process ensures reproducibility and reliability of the results in the context of the specific challenges faced by cross-border cooperation programmes. Apart from geographical and thematic extent of the programmes especially the availability of statistical data across national borders is a common problem. Thus the developed TIA CBC method has to combine quantitative-statistical with semi-quantitative and qualitative methods, in order to depict the net-impact of the programmes on their respective regions.



TIA CBC Impact Karte, © ÖIR GmbH

The developed method has been tested and refined in 5 case studies on INTERREG A programmes running in the 2014-2020 period. The result is a compendium of methods in the form of a handbook, which enables current and future CBC programmes to tender for and conduct a Territorial Impact Assessment of their programme on the basis of the ESPON TIA CBC project.

Project team: Erich Dallhammer; Bernd Schuh, Roland Gaugitsch, Martyna Derszniak-Noirjean, Roman Seidl

Partner: blue! advancing european projects GbR, M&E Factory Ltd., Maastricht University, Nordregio, Red2Red Consultores, S.L., University College Dublin, University of Liverpool

Client: ESPON EGTC

www.espon.eu/TIA-CBC