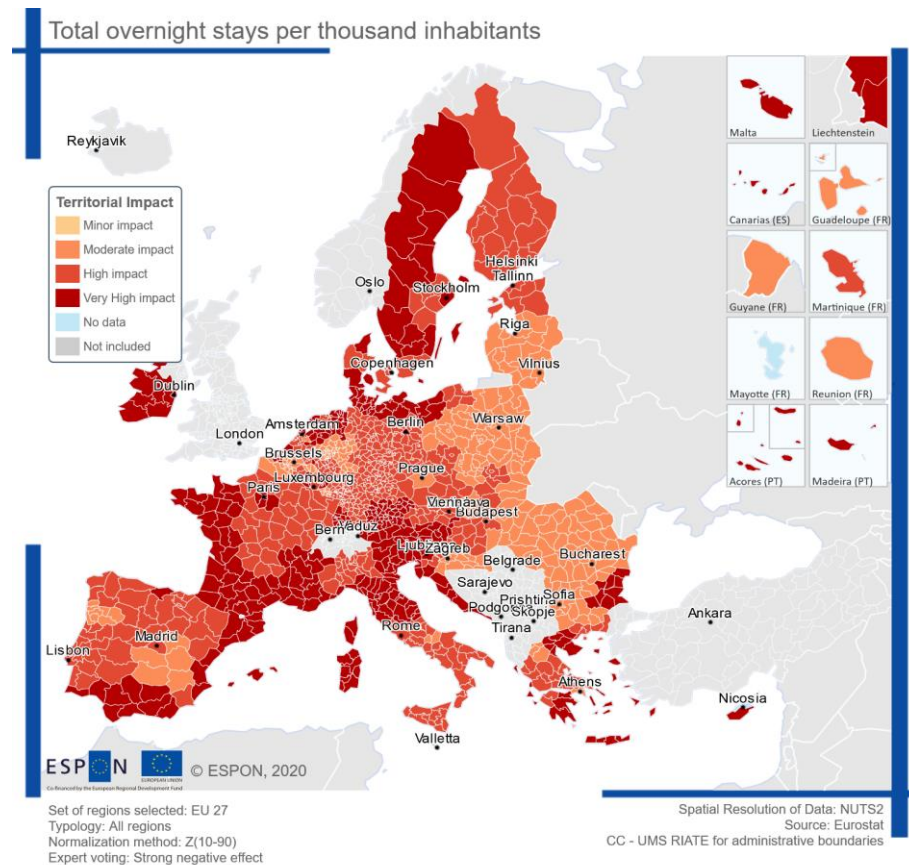


## The State of Cities and Regions in the COVID-19 crisis – Territorial Impact Assessment

Period of performance: 2020

The study assessed the impact of COVID-19 on European regions following the first wave of the pandemic in spring 2020. Particular attention was paid to local and regional authorities' perspective, their potential impacts and their possibilities in fighting the negative consequences as well as fostering the positive developments induced.

With the help of the ESPON TIA Tool, potential impacts on the regional level on the dimensions of economy, environment, society and governance were identified in an interactive workshop. ÖIR prepared and moderated the workshop as well as drafted the report and conclusions.



Expert voting of the effects of the pandemic on overnight stays – strongly negative effects, © ÖIR

**Project team:** Bernd Schuh; Erich Dallhammer, Roland Gaugitsch, Chien-Hui Hsiung

**Partner:** Spatial Foresight

**Client:** European Union, Committee of the Regions (via Spatial Foresight)

<https://cor.europa.eu/en/engage/studies/Documents/TIA-Covid19.pdf>