

REGIONS 2020

An Assessment of Future Challenges for EU Regions

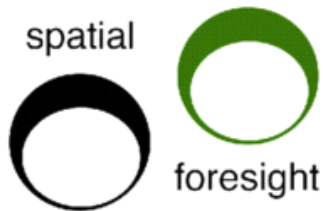
Regional Vulnerability to Global Challenges

Tasks: Regions 2020



- ▶ Regional vulnerabilities (NUTS 2) in the thematic fields:
 - Globalisation
 - Demographic change
 - Climate Change
 - Secure, sustainable and competitive energy
 - Social polarisation
- ▶ Show the effects of „multiple challenges“
- ▶ include the EU neighbourhood
- ▶ Show the effects of the economic crisis

The Team (thematic responsibilities)



Globalisation



Demographic Change



Bundesamt
für Bauwesen und
Raumordnung

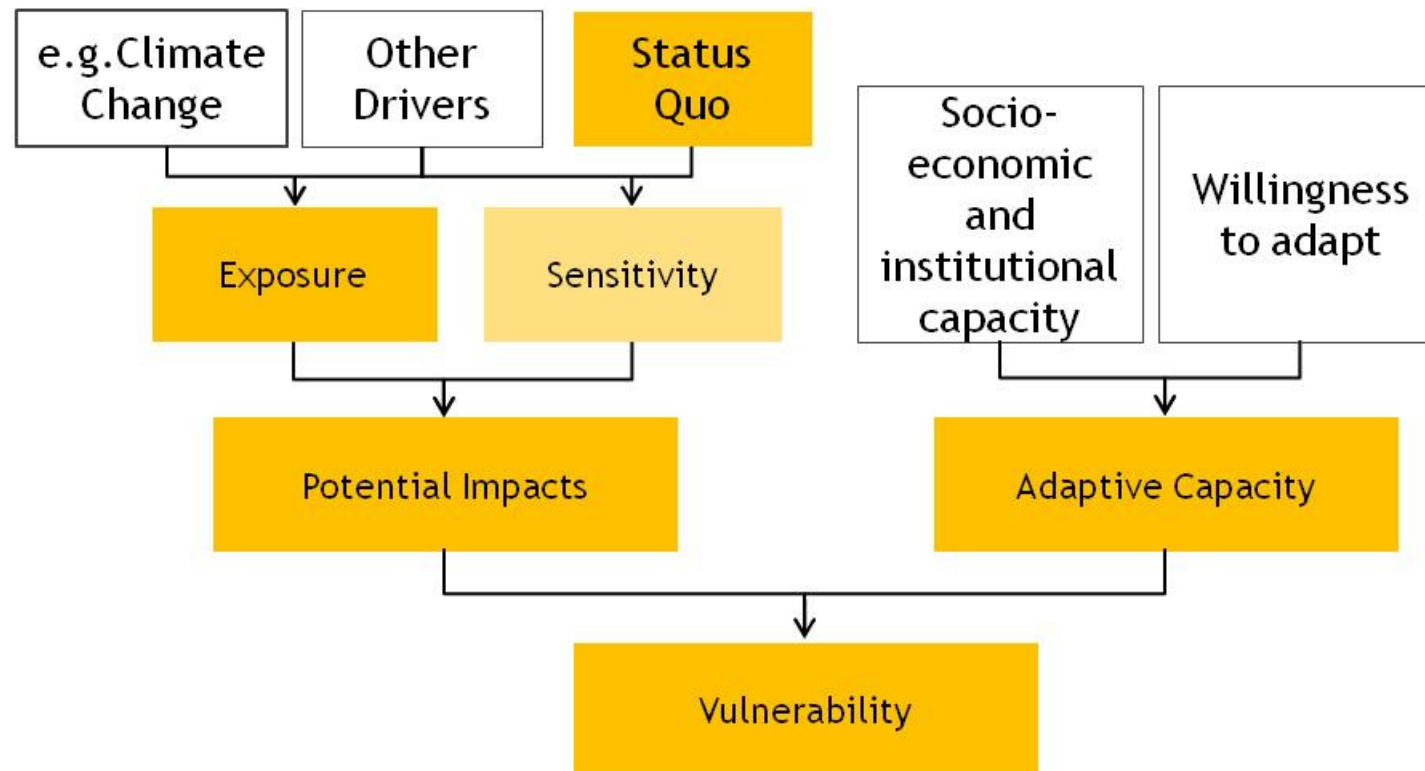


Secure, Sustainable and Competitive Energy



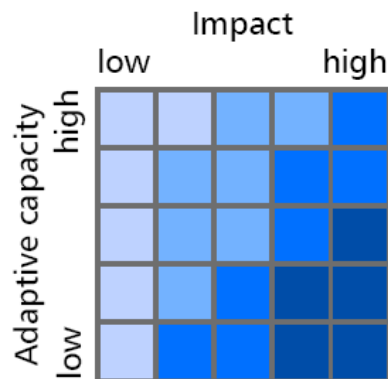
Climate Change

The concept of vulnerability



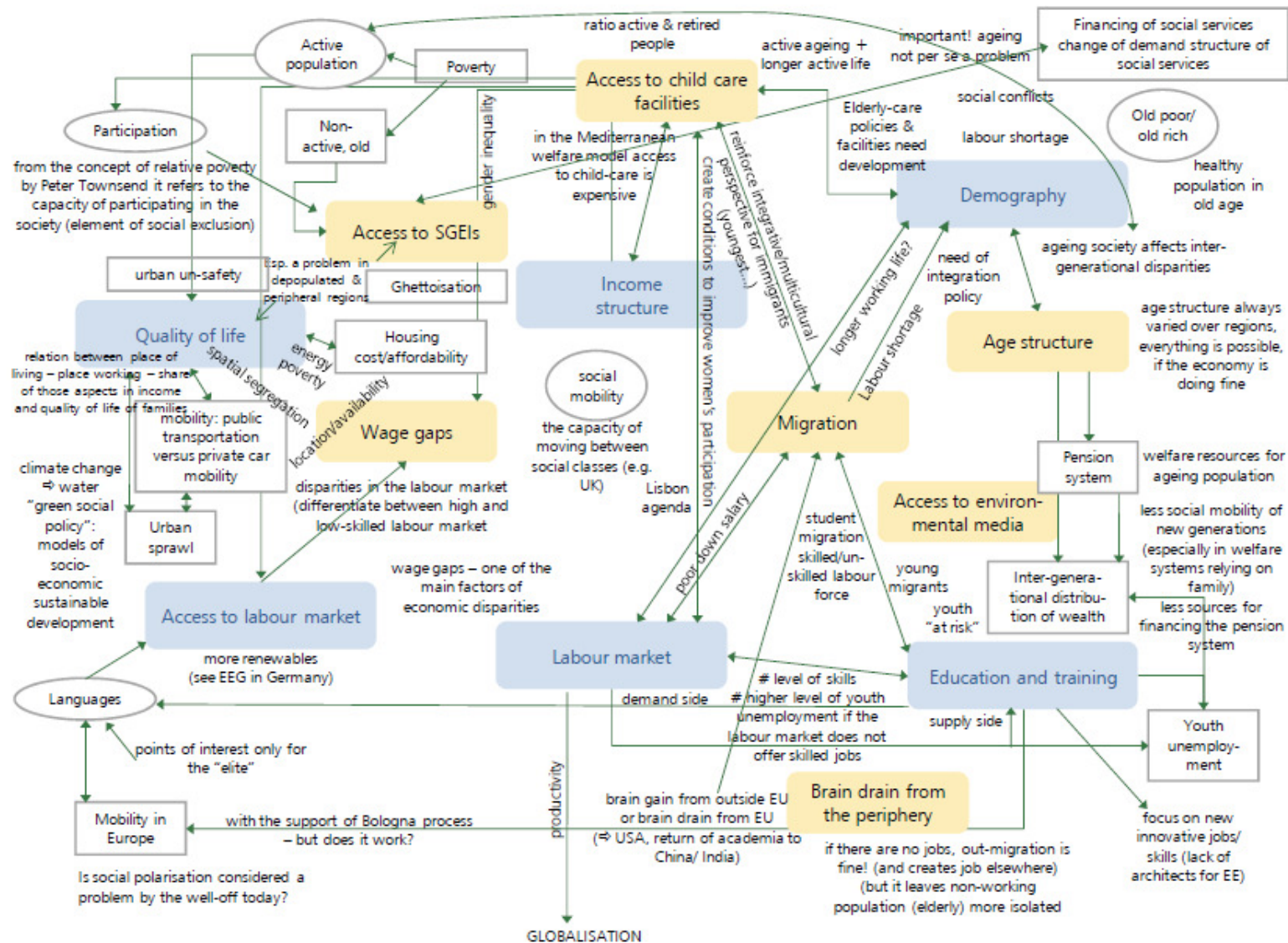
Methodology

- ▶ Picturing the situation in Europe through normalised indicators
- ▶ Description of the impact by logical combinations
- ▶ Combination of impact and adaptive capacity with vulnerability matrix



- ▶ Calculation of a cluster analysis for each challenge and all challenges in total

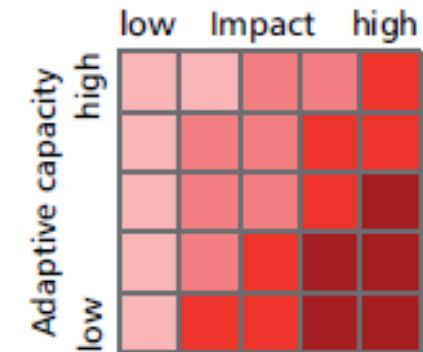
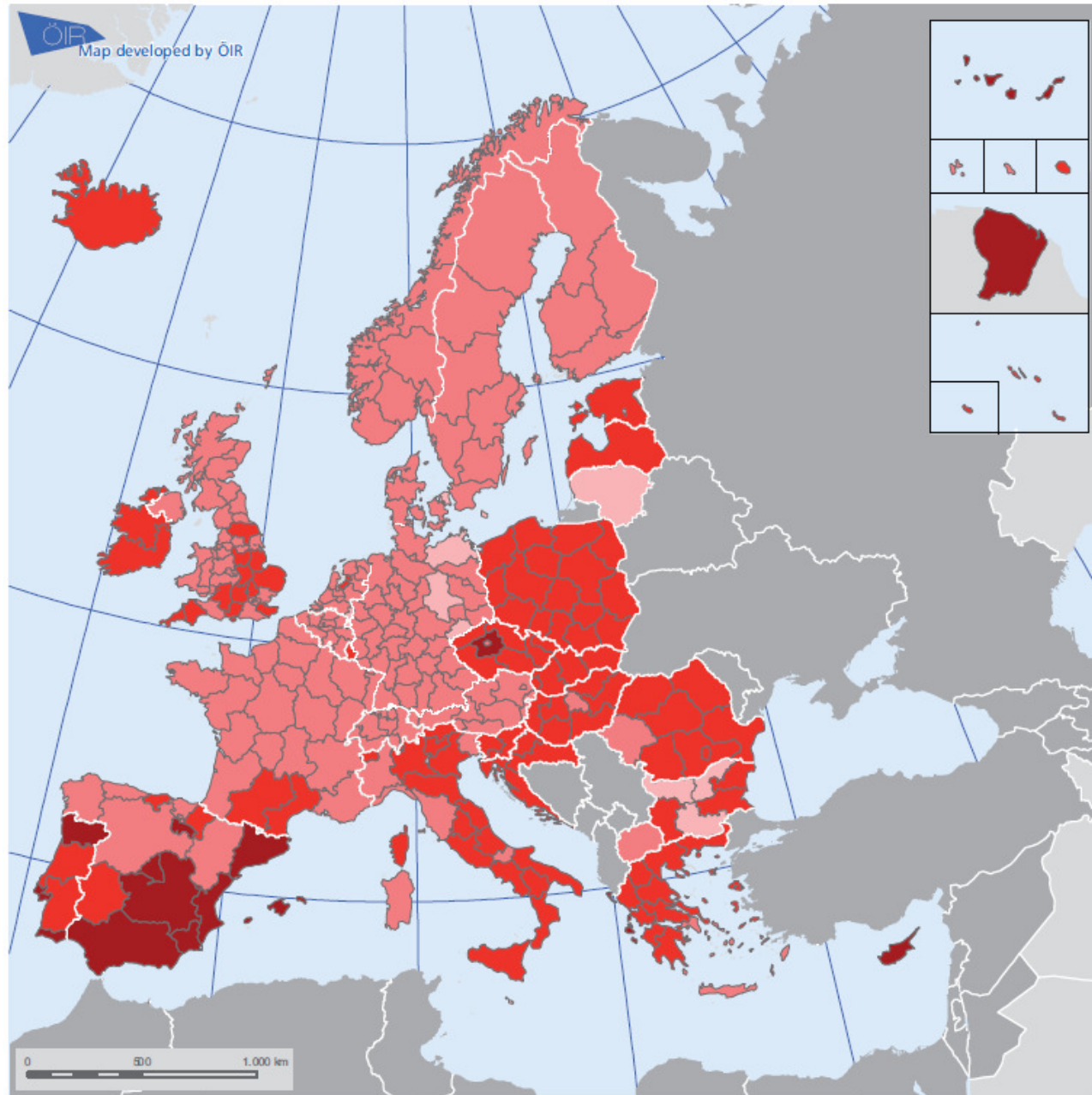
Social Polarisation – the systemic overview



Access to SGEIs - Vulnerability

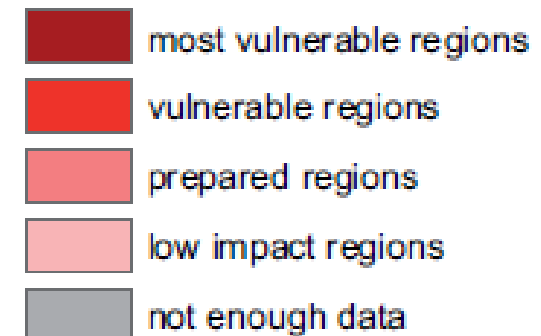


Bundesamt
für Bauwesen und
Raumordnung



Indicators describing adaptive capacity:

- Health care expenditures per capita
- GDP per capita

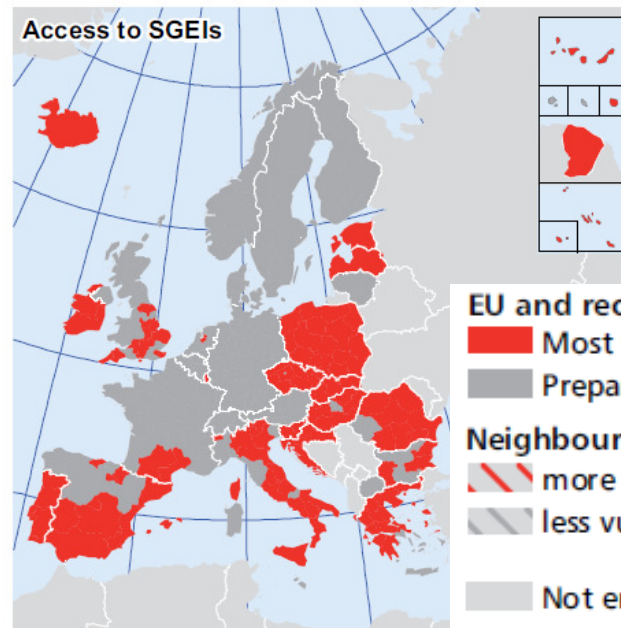
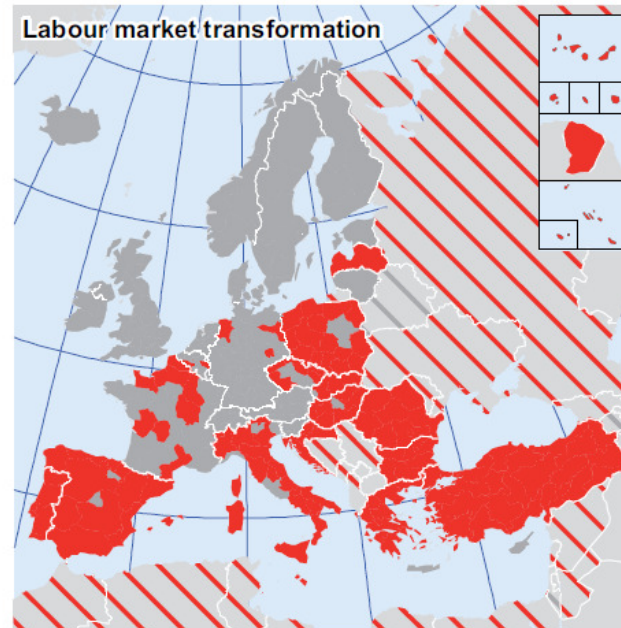
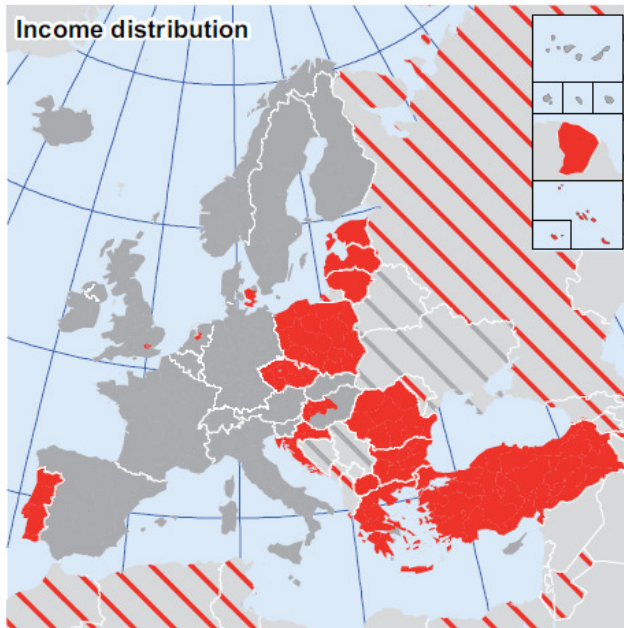


Indicators describing exposure:

- Hospital beds / 100.000 capita
- Physicians or doctors / 100.000 capita
- Expenditures for elderly care in % of GDP
- Road density
- Children in pre-primary education

Indicators describing sensitivity:

- Population development 2001-2007



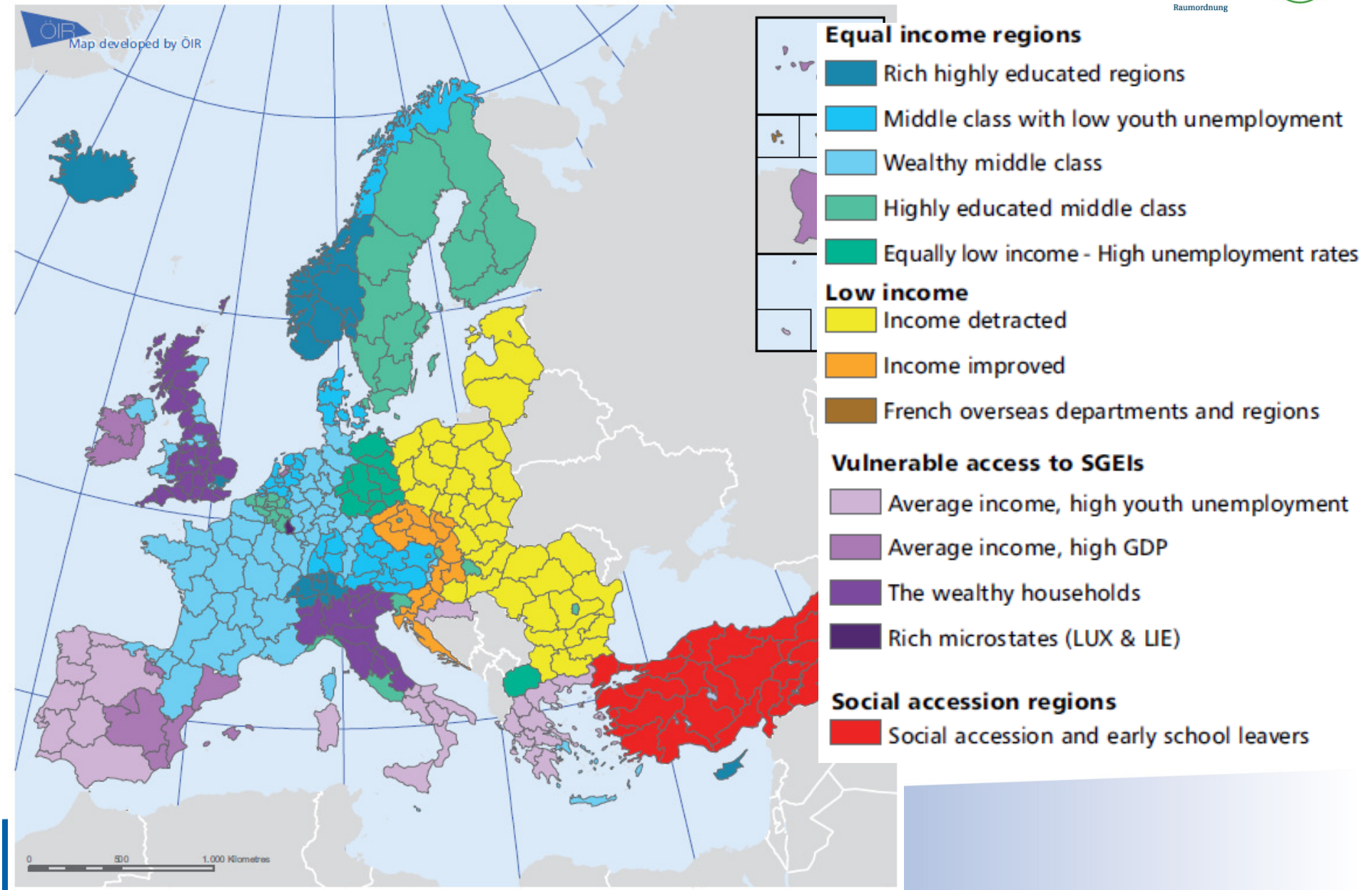
Social polarisation vulnerability at a glance

- EU and recognised candidate countries, EFTA
- Most vulnerable regions and vulnerable regions
- Prepared regions
- Neighbouring countries (simplified methodology)
- more vulnerable
- less vulnerable
- Not enough data

Social Polarisation – Integrated vulnerability



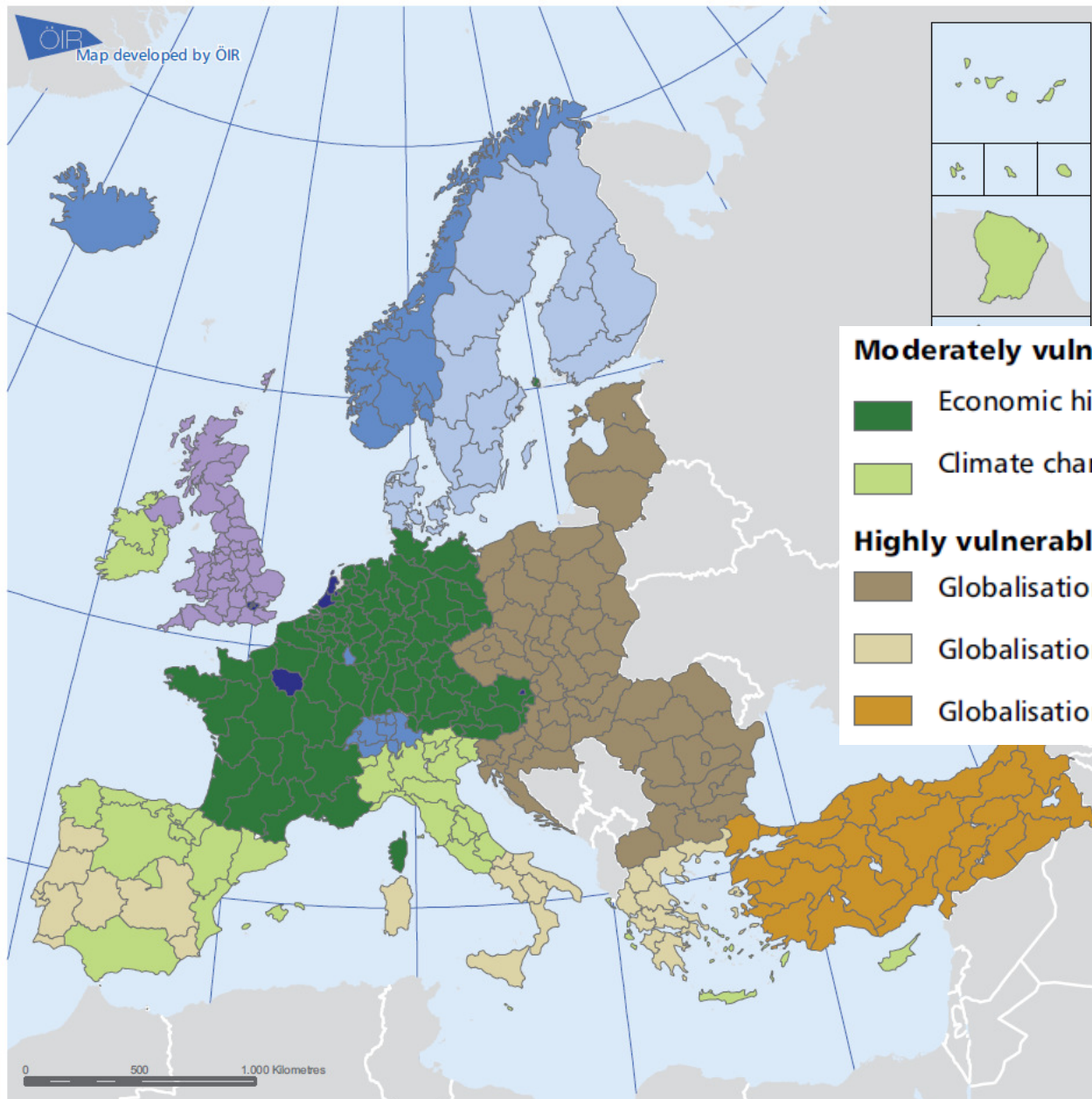
Bundesamt
für Bauwesen und
Raumordnung



Integrated vulnerability



Bundesamt
für Bauwesen und
Raumordnung



Barley vulnerable Europe

- Global economic high performers
- Social and economic high performers
- Social and knowledge high performer:
- UK

Moderately vulnerable Europe

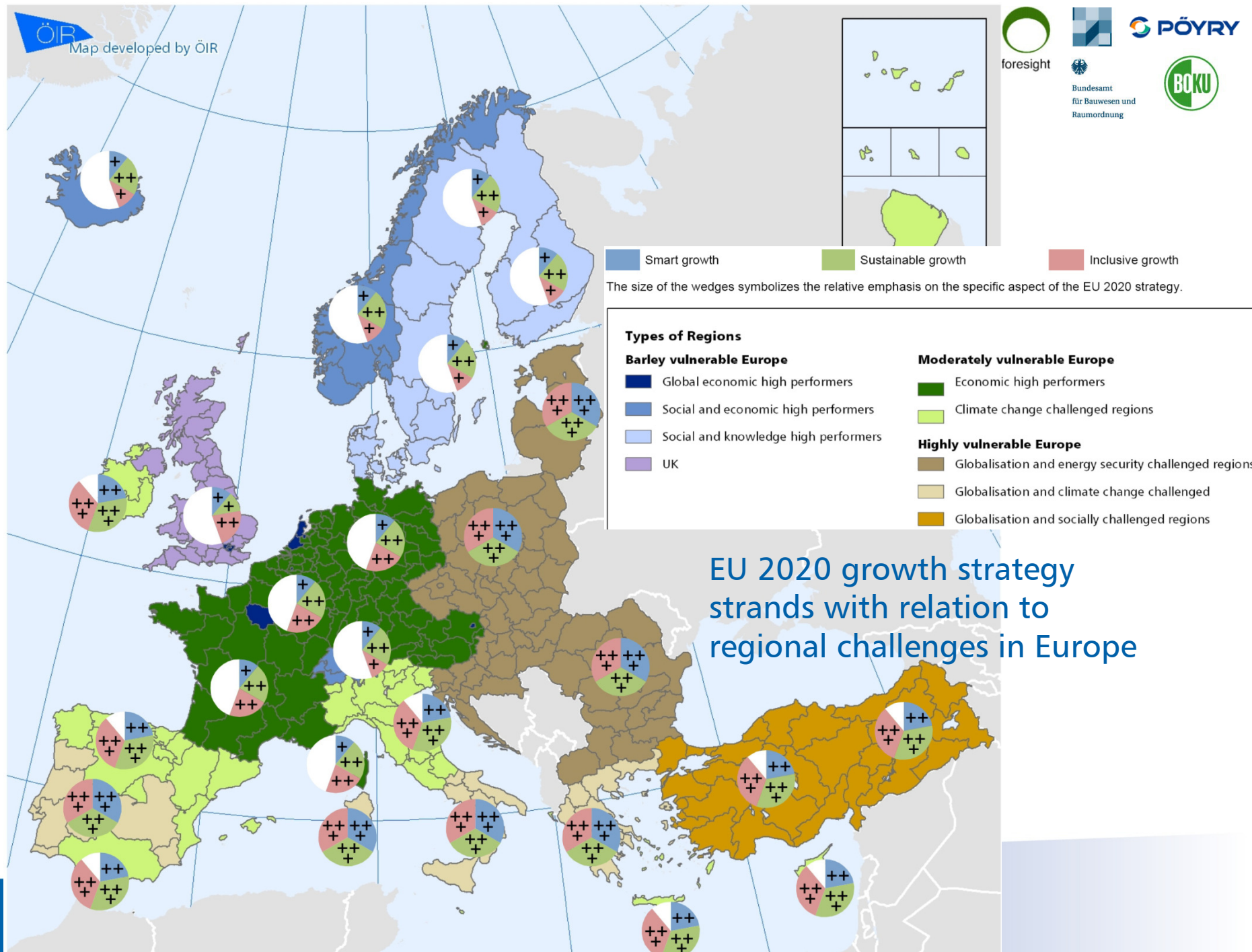
- Economic high performers
- Climate change challenged regions

Highly vulnerable Europe

- Globalisation and energy security challenged regions
- Globalisation and climate change challenged
- Globalisation and socially challenged regions



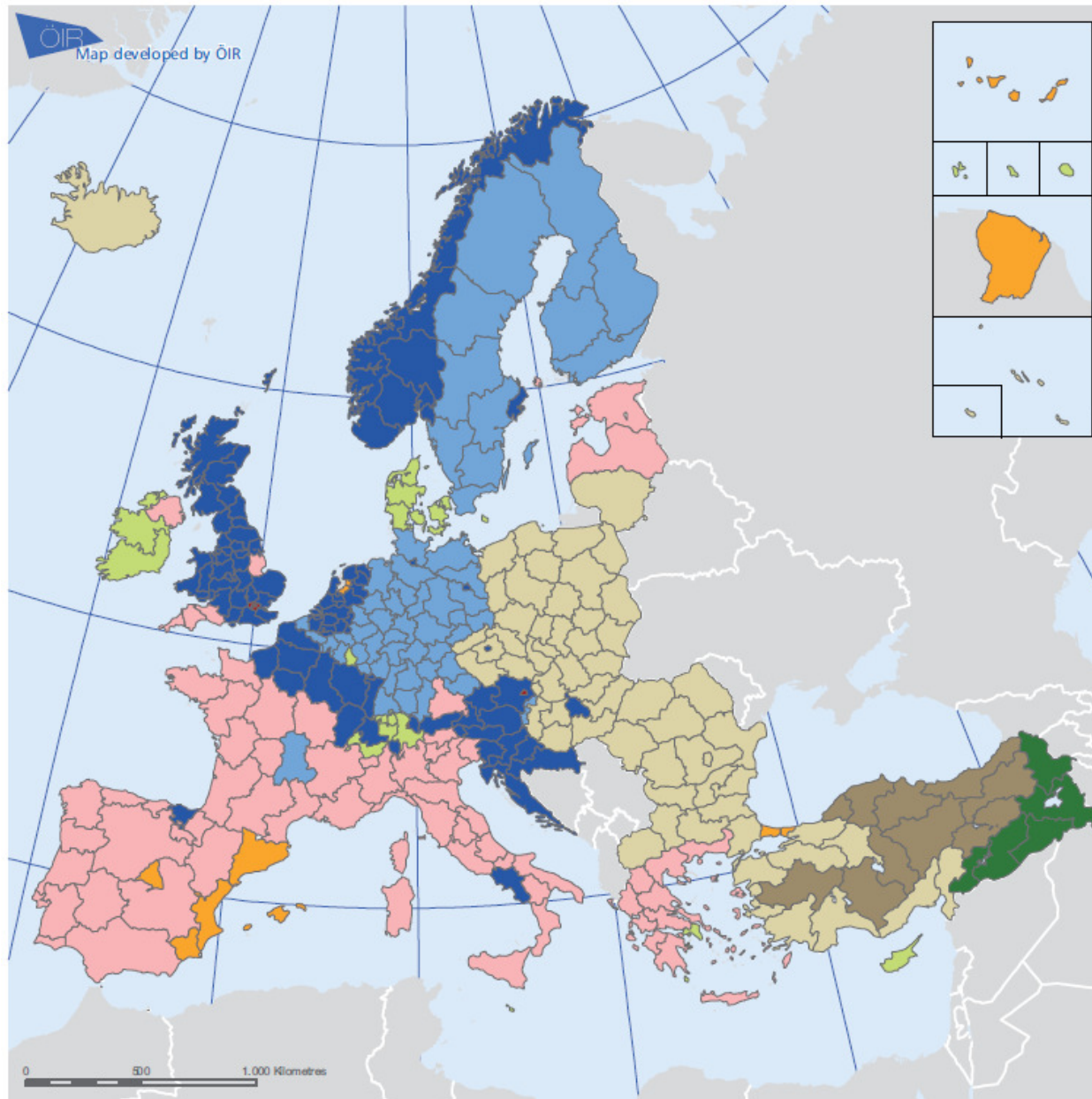
Challenges										growth strategies	
		Globalisation	Demographic change	Climate change	Secure, sustainable and comp. energy	Social polarisation	Smart growth	Sustainable growth	Inclusive growth		
Macro regions										Present cohesion policy objective	
Barely vulnerable – global economic high performers		+	+	++	+	+	+	++	++	Competitiveness and Employment Regions	
Barely vulnerable – social and economic high performers		+	+	+	+	+	+	++	+	Competitiveness and Employment Regions (mostly third countries)	
Barely vulnerable – social and knowledge high performers		++	+	+	+	+	+	++	+	Mostly Competitiveness and Employment Regions	
Barely vulnerable UK		+	+	+	+	++	+	+	++	Mostly Competitiveness and Employment Regions	
Moderately vulnerable – economic high performers		+	++	++	++	++	+	++	++	Mostly Competitiveness and Employment Regions	
Moderately vulnerable – climate change challenged regions		++	++	+++	++	++	++	+++	+++	Mostly Competitiveness and Employment Regions	
Highly vulnerable – globalisation and energy security challenged regions		+++	++	++	+++	++	+++	+++	+++	Mostly Convergence Regions	
Highly vulnerable – globalisation and climate change challenged		+++	++	+++	++	++	+++	+++	+++	Mixed Convergence and Competitiveness and Employment Regions	
Highly vulnerable – globalisation and socially challenged regions		+++	++	+++	+++	+++	++	+++	+++	Candidate country	
+	Barely challenged/basic emphasis on growth strategy	++		Moderately challenge/average emphasis on growth strategy					+++		Highly challenged/high emphasis on growth strategy



Demographic change



Bundesamt
für Bauwesen und
Raumordnung



Demographic high-performers

- Western demographic high performer
- Turkish demographic high performer

Migration destinations

- Metropolitan immigration destinations
- Moderate-growth immigration destinations
- High-growth immigration destinations

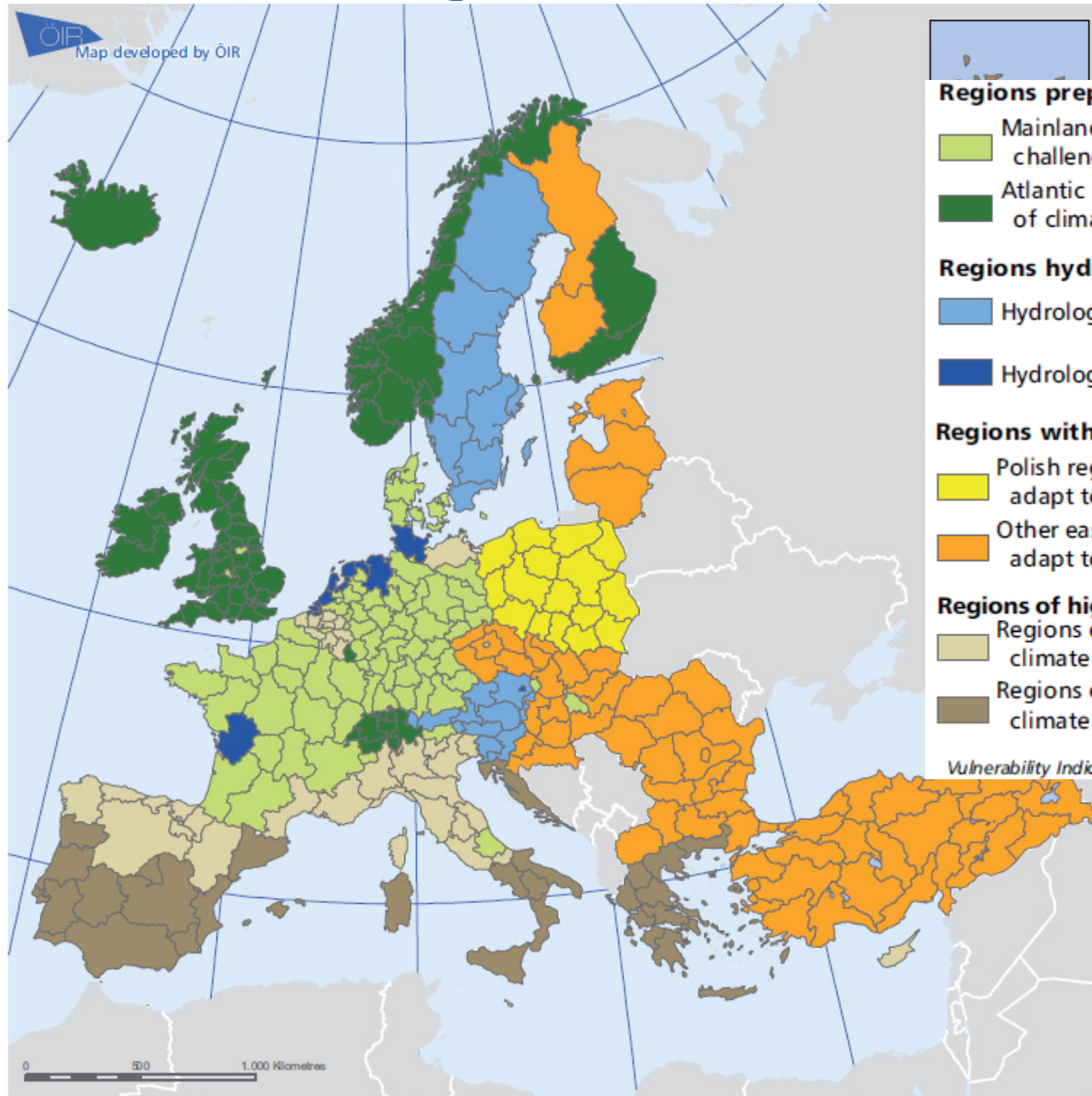
Balanced demographic regions

- Balanced demographic regions growing
- Balanced demographic regions ageing

Migration origins

- Eastern migration sources and Iceland
- Central Turkish migration sources

Climate Change



Regions prepared for climate change

- Mainland regions prepared for the challenges of climate change
- Atlantic regions prepared for the challenges of climate change and Switzerland

Regions hydrologically affected

- Hydrologically affected inland regions
- Hydrologically affected waterside regions

Regions with deficits to adapt to climate change

- Polish regions with deficits to adapt to climate change
- Other eastern regions with deficits to adapt to climate change

Regions of high multiple climate change vulnerability

- Regions of high multiple climate change vulnerability
- Regions of very high multiple climate change vulnerability

Regional Challenges in the Perspective of 2020, Vulnerability Indices Indicator data source Eurostat except where indicated